

# We test, You produce

## F28 Light

### HIGH SPEED LEAK TESTER

### FOR INDUSTRIAL QUALITY CONTROL

Without any doubt, the smallest high performance leak tester on the market. One of the main advantage is that our **F28 Light** module can be mounted close to the test part, ensuring the best measurement conditions. You can daisy chain up to 50 modules and supervise them with a touch screen panel + our user friendly interface: F28 light demo.

Specially adapted for automatic and semi automatic test machines, the **F28 Light** has a full range of specifications at a very competitive price.

#### Highlights

- COMPACT
- HIGH SPEED TEST
- ACCURATE
- 50 MODULES NETWORK



#### Applications



Packaging, blister, watch, mobile phone, pneumatic and hydraulic fittings...



# F28 Light

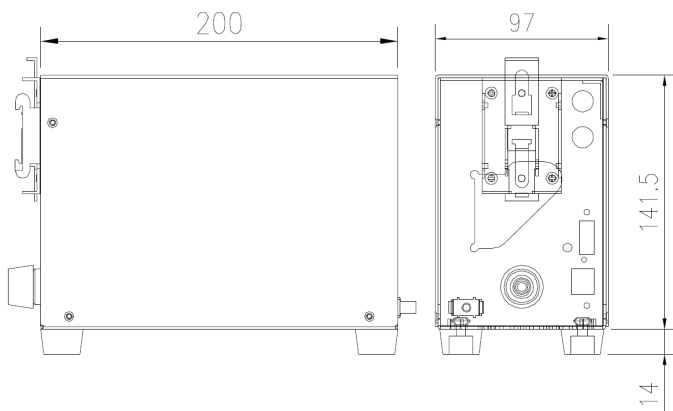
## HIGH SPEED LEAK TESTER

### FOR INDUSTRIAL QUALITY CONTROL

#### Measurement Characteristics

PRESSURE DROP MEASUREMENT		
Range	Accuracy*	Max. resolution
0 - 50 Pa	$\pm(1.5\% \text{ Reading} + 0.5 \text{ Pa})$	0.01 Pa
0 - 500 Pa	$\pm(1\% \text{ Reading} + 1 \text{ Pa})$	0.1 Pa
0 - 5000 Pa	$\pm(1\% \text{ Reading} + 10 \text{ Pa})$	1 Pa

Accuracy: linearity + repeatability + hysteresis  
 \*Optional laboratory accuracy available



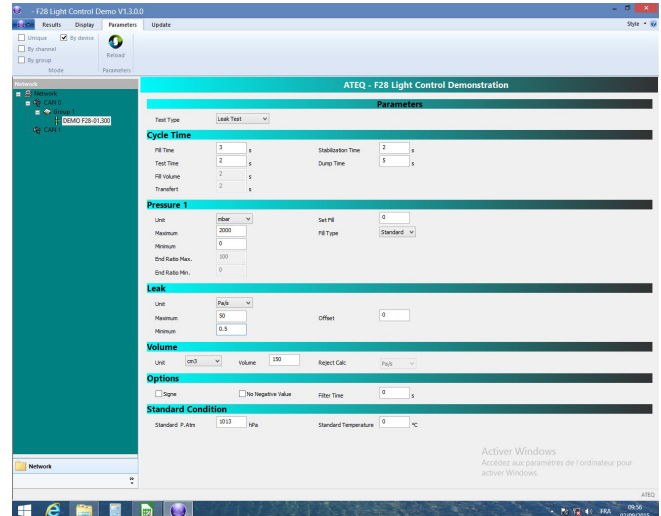
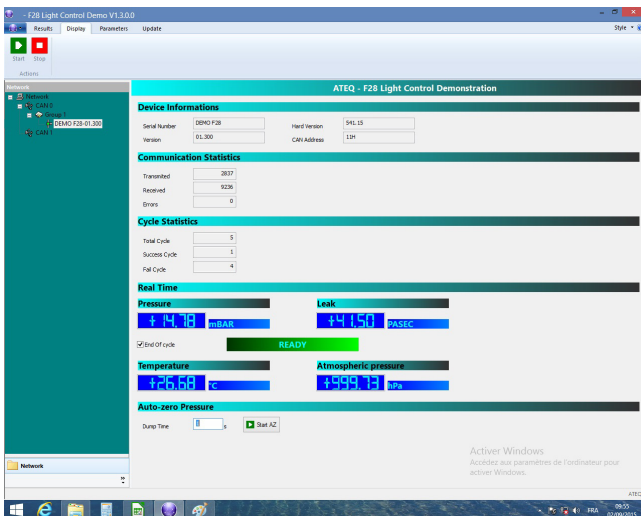
#### Main Features

- Differential pressure decay leak measurement
- Types of measurement:  
Direct mode / Sealed test components / Desensitized leak mode
- Smart pressure regulation without regulator - auto fill (optional)
- Electronic regulation (optional)
- Units: Pa, Pa/s, sccm
- Compact dimensions (overall (mm): h 141.5 x L 225 x D 97)
- Mechanical or electronic regulator from vacuum to 5 bar
- Integrated fill and dump valves
- Ethernet network up to 50 modules (Modbus IP)
- DIN rail mounting
- Environment: ROHS standard

#### Technical Specifications

<b>Presentation</b>	Weight: around 3.5 Kg
<b>Electrical external supply</b>	Voltage: 24 V DC / 1.6 A Main adaptater included 110 – 230 V AC
<b>Air supply</b>	Clean and dry air required Air quality standard to be applied (ISO 8573-1) Test pressure input, need an external regulator
<b>Temperature</b>	Operating: +5°C to +45°C Storage: 0°C to +60°C

#### F28 light demo interface



Specifications subjects to change without notice, non contractuel photos, September 2023.



ATEQ USA HQ  
 35980 Industrial Rd. Livonia, MI 48150 USA HQ - T.: +1 (734) 838-3100  
 F.: +1 (734) 838-0644 - leaktestsales@atequsa.com - atequsa.com

