

We test, You produce

CDH6000 CALIBRATOR FOR H6000 LEAK DETECTOR

The **CDH6000** is a gas H_2N_2 (5% hydrogen) supply that checks the calibration of the H6000. It can be used with one or several calibrated leaks.

Highlights

- SUITABLE FOR INDUSTRIAL APPLICATIONS
- SIMPLE TO USE



CDH6000 Setup

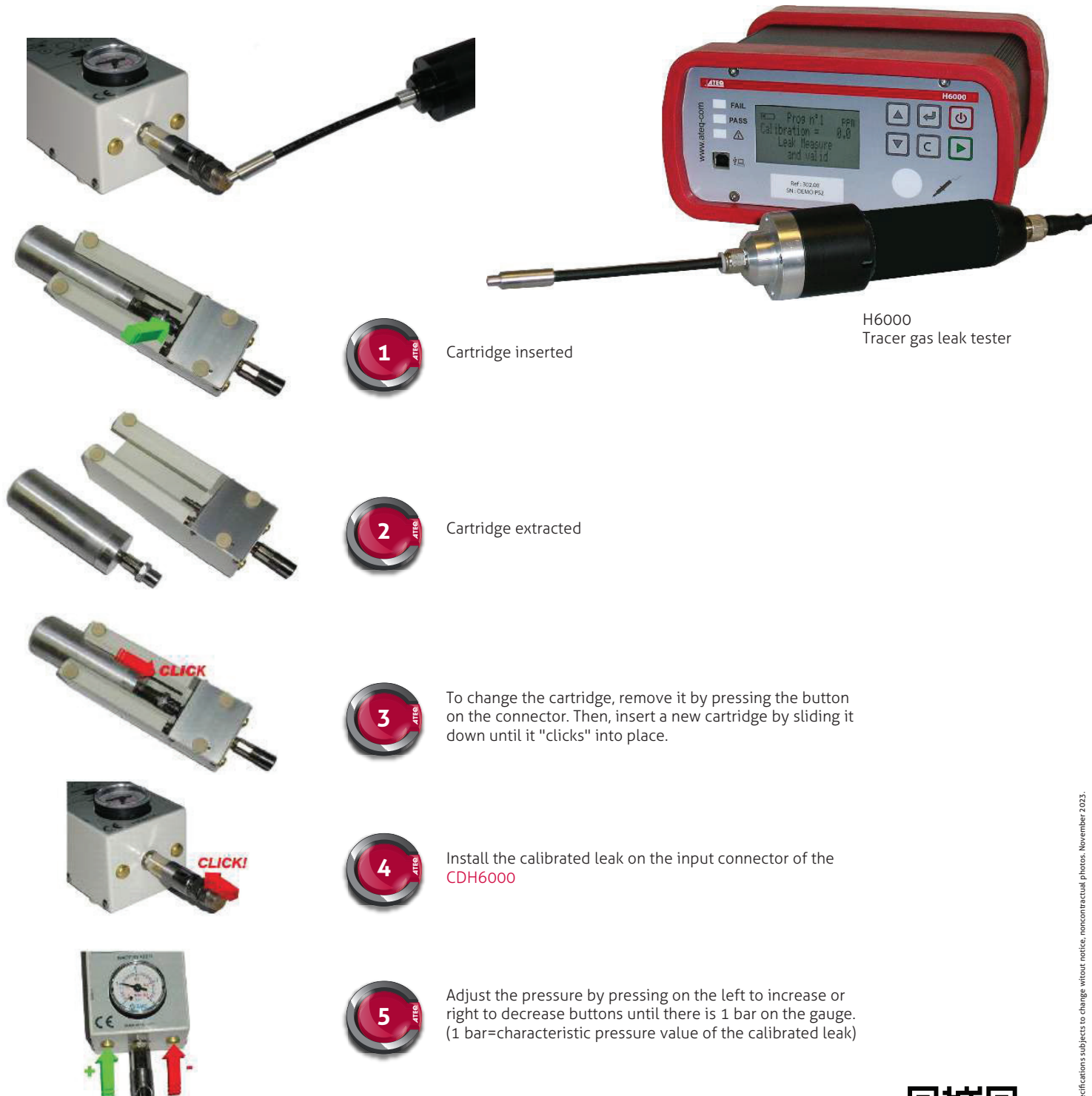
- The CDH6000 must be fitted with a calibrated leak to deliver a known quantity of gas $H_2 N_2$ (5% hydrogen) at a given pressure.
- If the pressure displayed on the gauge of CDH6000 does not exceed 1 bar, change the cartridge (maximum pressure: 4 bars)
- To purchase cartridges filled with gas $H_2 N_2$ (5% hydrogen) contact ATEQ.



CDH6000

CALIBRATOR FOR H6000 LEAK DETECTOR

Tips: When the operator has finished using the calibrator CDH6000, disconnect the calibrated leak and store it in its case to avoid excessive pollution of the test area.



H6000
Tracer gas leak tester



1 Cartridge inserted



2 Cartridge extracted



3 To change the cartridge, remove it by pressing the button on the connector. Then, insert a new cartridge by sliding it down until it "clicks" into place.



4 Install the calibrated leak on the input connector of the CDH6000



5 Adjust the pressure by pressing on the left to increase or right to decrease buttons until there is 1 bar on the gauge. (1 bar=characteristic pressure value of the calibrated leak)

Specifications subjects to change without notice, noncontractual photos, November 2023.



ATEQ USA HQ
35980 Industrial Rd. Livonia, MI 48150 USA HQ - T.: +1 (734) 838-3100
F.: +1 (734) 838-0644 - leaktestsales@atequsa.com - atequsa.com

